

The Rose Garden Returns

June 23, 2009

New Britain City Hall

Room 504



Friends of
the Walnut Hill Park
Rose Garden

A Very Brief History

- Walnut Hill Park –
 - New Britain landmark
 - Designed by Fredrick Law Olmstead
- Rose Garden added in 1929
- Neglected and eventually removed



Why we're excited!

This garden will

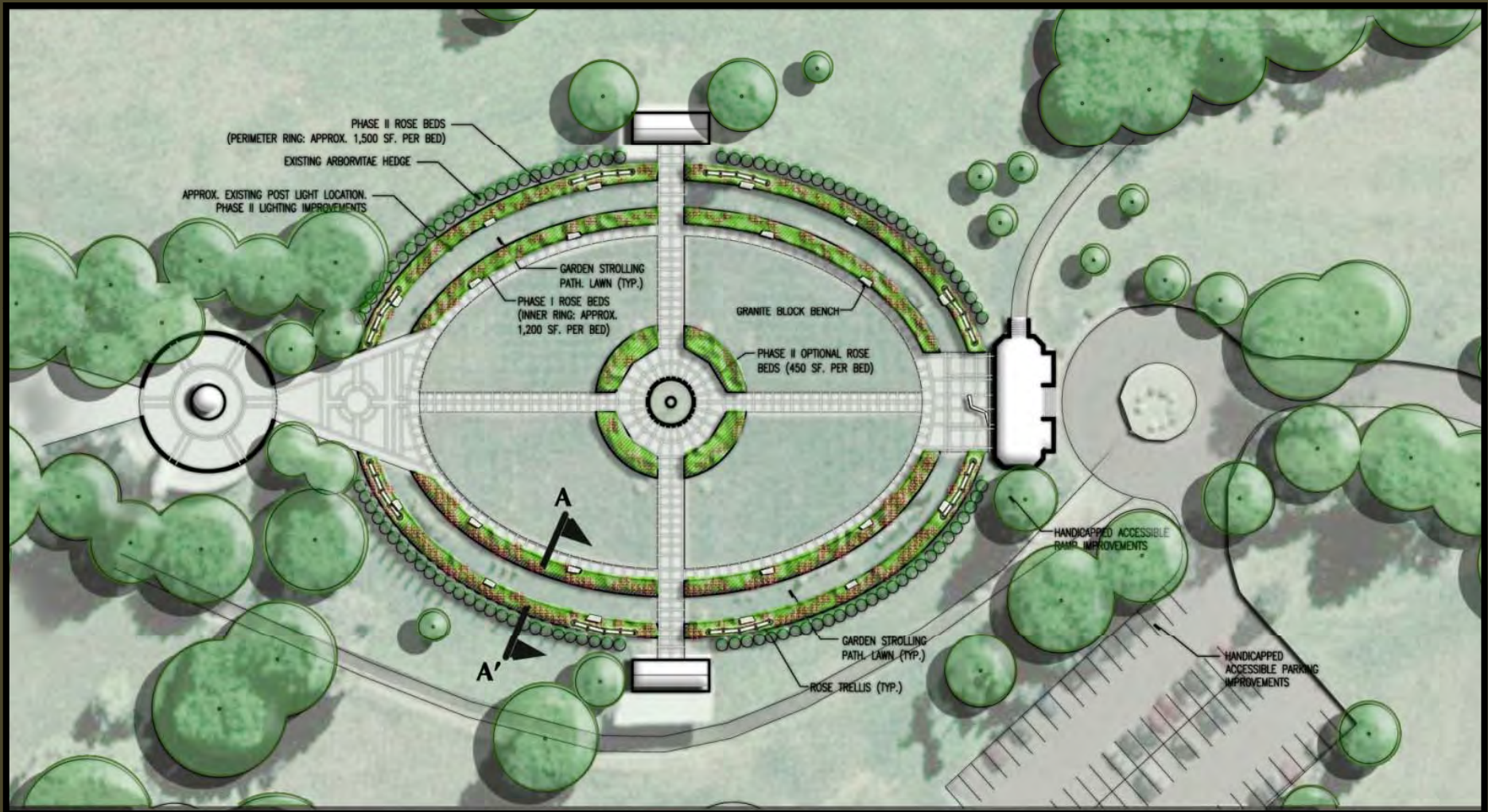
- Be a community building tool!
- Ensure beautification & preservation of urban green space.
- Provide an opportunity for intergenerational & cross-cultural connections.
- Be therapeutic and reduce stress.
- Build a learning environment for children and adults.

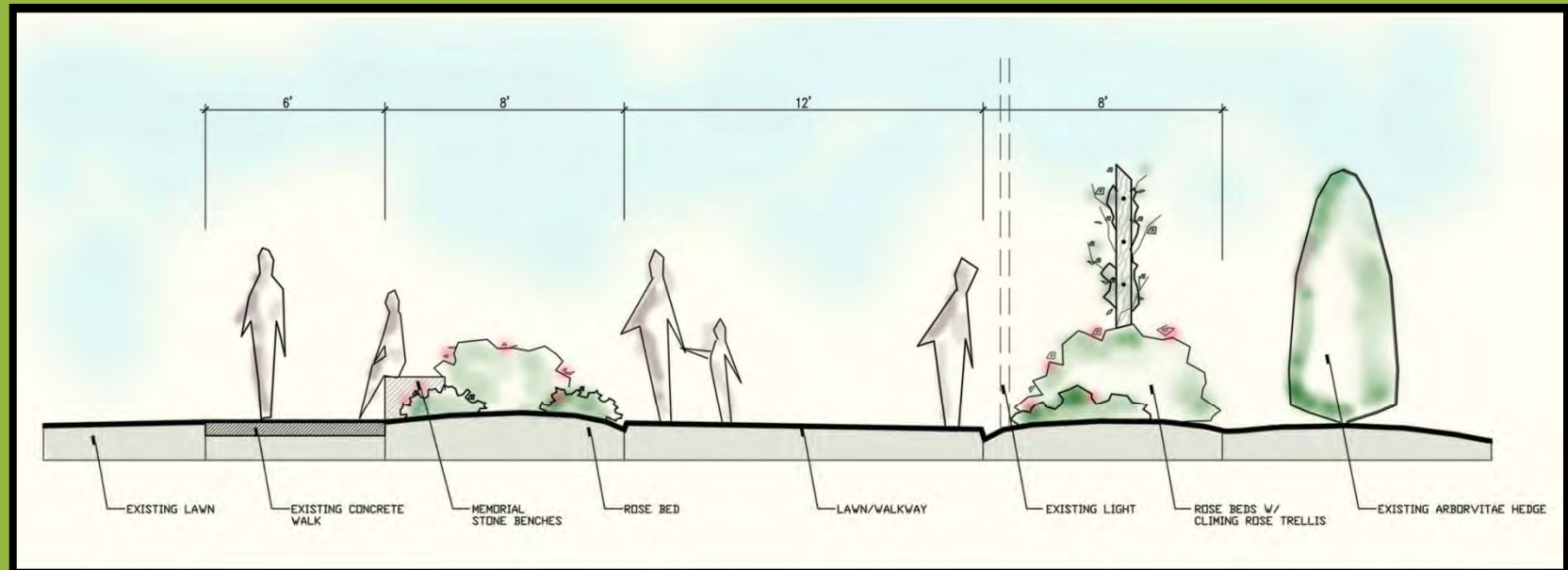
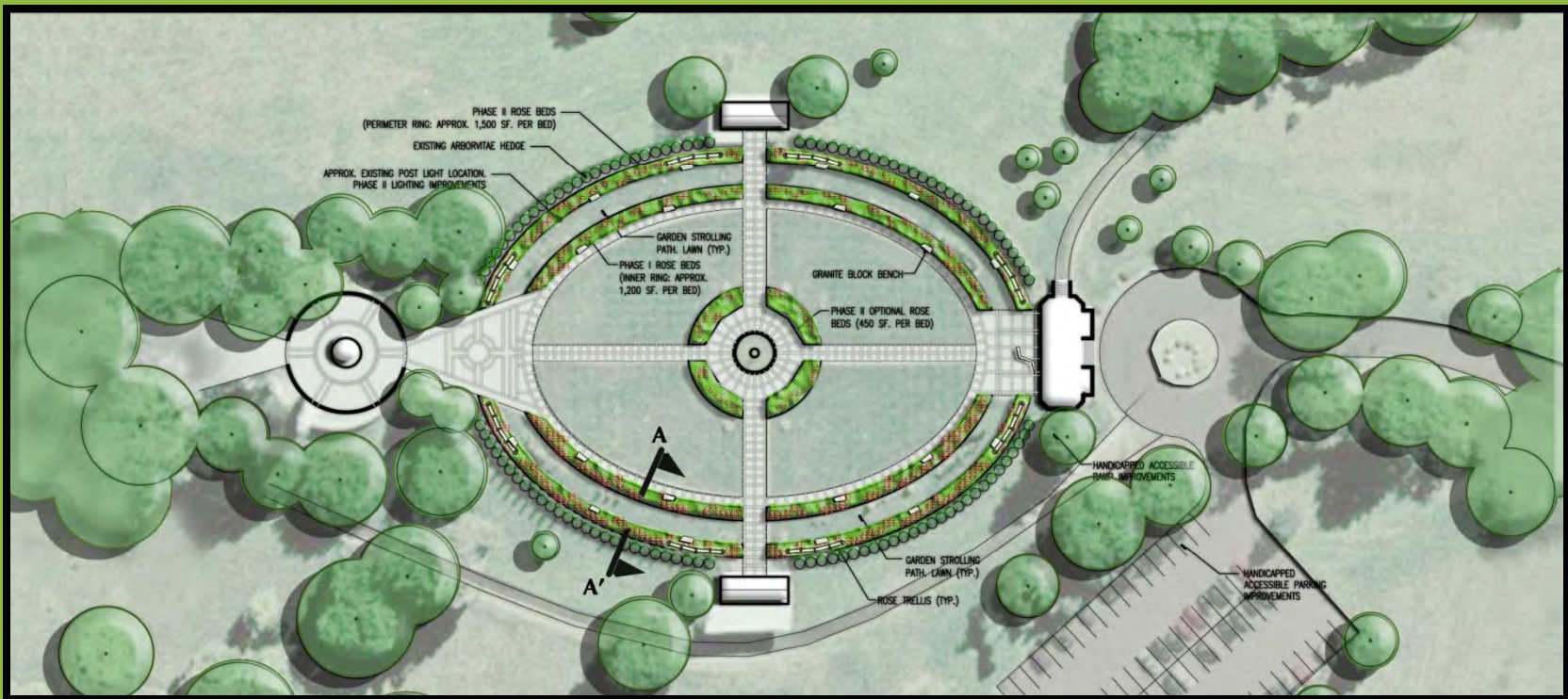


Location & Existing Conditions



Rose Garden Plan





Budget

Item	Per Unit Cost	Year 1 Quantity	Year 1	Year 2 Quantity	Year 2	Year 3	Year 4	Year 5
Land	Donated by NBP&R	n/a		n/a				
Rose Bushes	\$8.00	215	\$1,720.00	215	\$1,745.80	\$175.00	\$175.00	\$175.00
Additional plants+			\$500.00		\$500.00	\$20.00	\$20.00	\$20.00
Embellishments	\$150.00	4	\$600.00	0	\$0.00			
Community Tools	\$5.00	20	\$100.00	10	\$50.00			
Major Tools	Donated by NBP&R	n/a	\$0.00	n/a	\$0.00			
Marketing & Promotions			\$1,200.00		\$600.00			
Educational Materials			\$250.00		\$125.00			
Soil (per c.yd)	\$28.50	95	\$2,702.22	95	\$2,742.76			
Mulch* (per c.yd)	\$21.75	11	\$241.67	23	\$506.94	\$517.07	\$527.42	\$537.96
Insecticides*	\$150.00	1	\$150.00	2	\$300.00	\$306.00	\$312.12	\$318.36
Irrigation*	Donated by NBP&R	n/a		n/a				
Fertilizer*	\$150.00	1	\$150.00	2	\$304.50	\$310.59	\$316.80	\$323.14
Total			\$7,614		\$6,875	\$1,329	\$1,351	\$1,374

Approximately \$18,500 needed for planting and funding the garden for first 5 years

How We're Doing It

- Donations for initial outlay
- Dedicate a rose
 - Make tribute to a friend or family member
 - Remember a loved one
 - Celebrate a birthday or anniversary
 - Commemorate a special occasion
- Fiscal sponsorship with CFGNB
- Reduced rates on quality supplies



Community Involvement

- Residents
- Local Garden Clubs
- UConn Master Gardeners
- Landscapers, growers and garden suppliers
- And help from the ...
 - Eagle Scouts
 - EC Goodwin Technical School
 - Hospital of Central Connecticut
 - Klingberg Family Center
 - New Britain High School
 - New Britain Institute
 - New Britain Museum of American Art
 - YWCA (STRIVE Program)
 - And more!

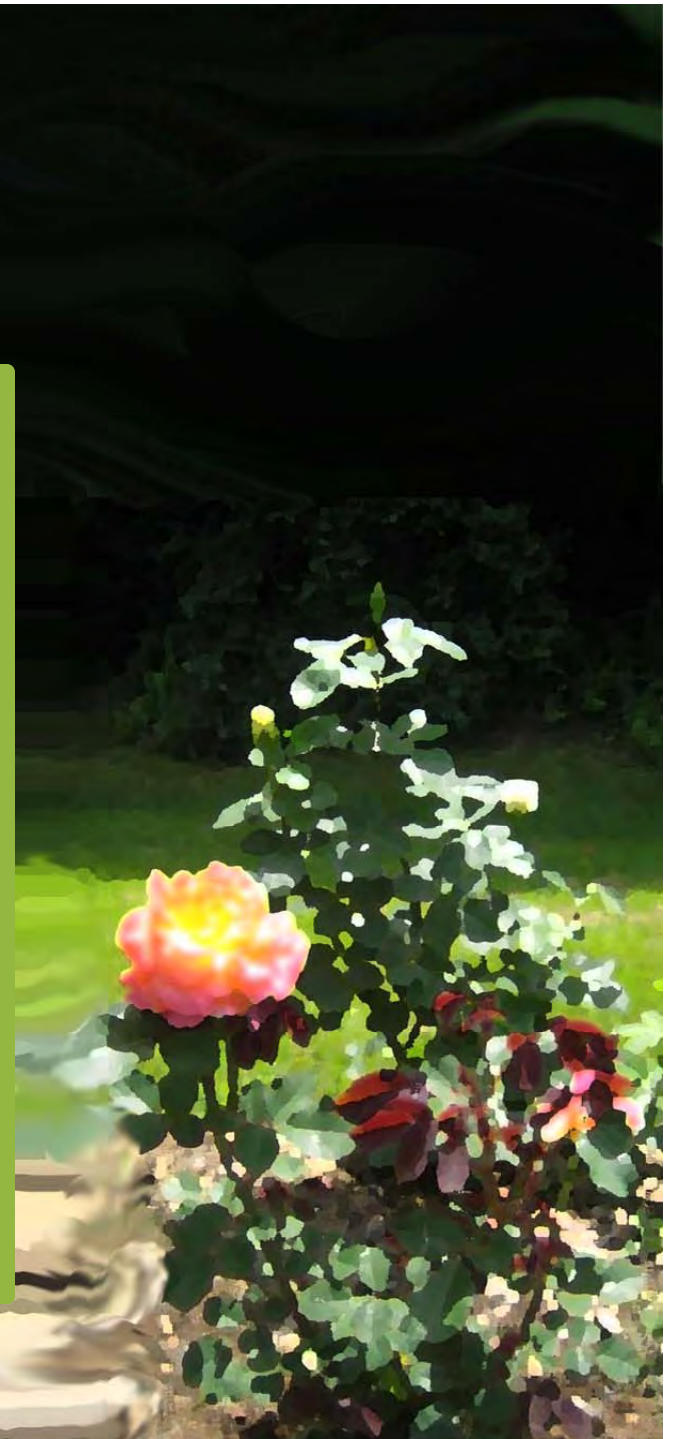
Friends of Walnut Hill Park Rose Garden

- Looking for members to help us organize, plan and get gardening!
 - Manage and execute tasks
 - Prepare and develop the site
 - Set up organization



We need your help!

- Visionaries and designers
- Rosarians, rose experts and horticulturalists
- Garden Volunteers
- Master Gardeners
- Fundraising and promotion
- Coordinating events
- Photos or movies of the Rose Garden



THANK YOU FOR COMING!

www.friendsoftherosegarden.org



Friends of
the Walnut Hill Park
Rose Garden